



The Waterhead is a four-star town-house hotel on the shores of Lake Windermere, close to the town of Ambleside and only 20 minutes from the M6 (Junction 36). The Bay Restaurant & Bar offers modern British cuisine in a contemporary setting overlooking Waterhead Bay. Residents enjoy full use of the extensive leisure facilities at our sister hotel, Low Wood, one mile away.

The Waterhead has two dedicated conference rooms – the Brathay and the Rothay – with an adjoining small business connecting facility. The adjacent hotel reception offers full office facilities and also allows for both private dining and split-meeting opportunities. Ideal bright and airy break-out lounge areas to enjoy and with WIFI, access to stay connected.

## Meeting Room Facilities

Maximum room numbers:

Brathay: 45 delegates

Rothay: 25 delegates

Reception/Banqueting: 88 delegates

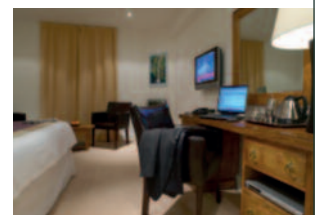
High Speed Internet Access

Fully Air-conditioned and Soundproofed

Natural, Tungsten & Fluron lighting

Telephone Points

Large-screen TV/DVD, projector & screen



T 015394 39469  
englishlakes.co.uk

English Lakes  
Hotels Resorts & Venues



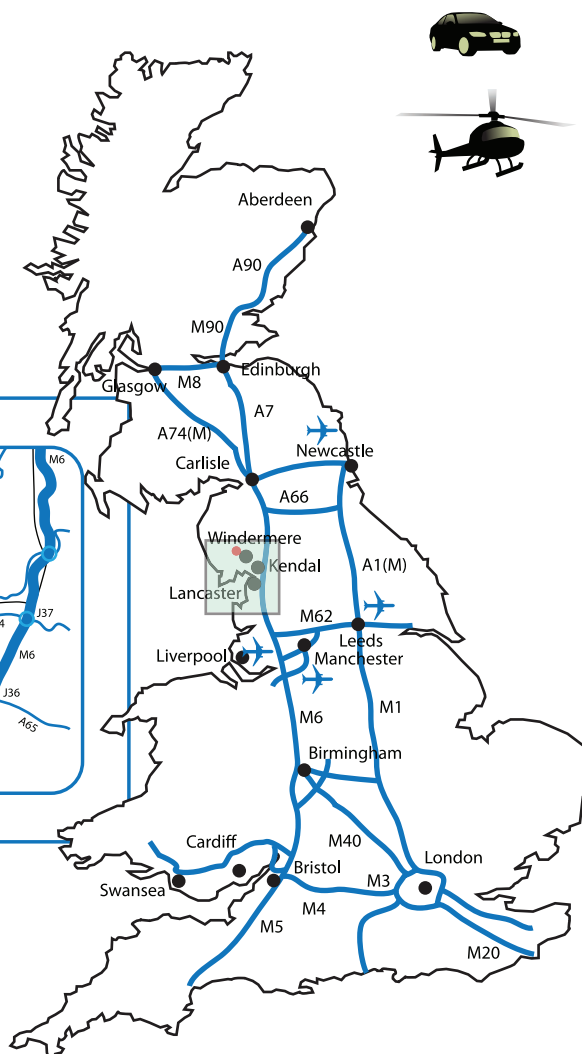
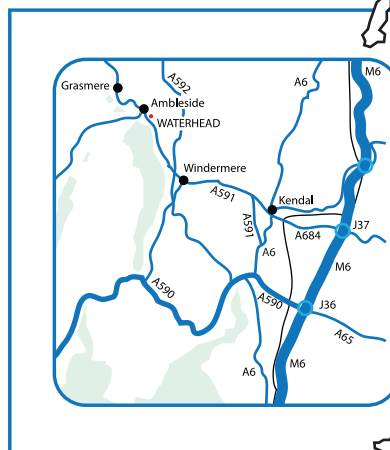
## Location

**Road:** From the South M6, off at Junction 36, onto A590 and then A591 signposted to Kendal and Windermere. Hotel situated 3 miles North of Windermere village. From North M6, off at Junction 40, onto A66 towards Keswick then A591 to Ambleside. Hotel just South of Ambleside.

**Rail:** West Coast – Main Line. London – Glasgow, stopping at Oxenholme. Change trains for Windermere Station. Taxis available outside the station. (London to Oxenholme 2hrs 45mins).

**Air:** Distance to hotel from the following airports –  
Manchester: 92 miles,  
Blackpool: 66 miles,  
Liverpool: 99 miles,  
Glasgow: 146 miles.

**Parking:** The Waterhead has 41 parking spaces for cars. Helicopter landing can be arranged near the hotel grounds.



## Hotel Facilities

Leisure Club with on-site beauty salon at sister hotel Low Wood (1 mile)  
Watersports & activity centre  
The Bay Cafe, Restaurant & Bar  
Opposite Windermere Lake Cruises jetty FREE Parking

## Accommodation

41 ensuite bedrooms (many have views over the lake)

All rooms have:  
High Speed Internet  
Flat screen TV/DVD & Mp3 docks  
Direct Dial telephone  
Room Service  
Complimentary Tea & Coffee  
Ironing/Pressing  
Hairdryers  
Safe



## The Bay Restaurant

The Bay Cafe Bar & Restaurant presents uncomplicated modern European cuisine in light and airy contemporary surroundings, that have been proclaimed as 'city chic on the shores of a lake!'

The Bar leads out onto a lawned garden area which sits overlooking the Steamer Pier where guests can travel direct to Bowness-on-Windermere to explore on foot, or there is the choice of a stroll into Ambleside.

